

# Pinal County Population Estimates DRAFT January, 2008

Planning Department  
Central Arizona Association of Governments

This paper describes draft estimates of existing population in Pinal County, including its incorporated jurisdictions, unincorporated communities, Municipal Planning Areas (MPA's), and Traffic Analysis Zones (TAZ's).

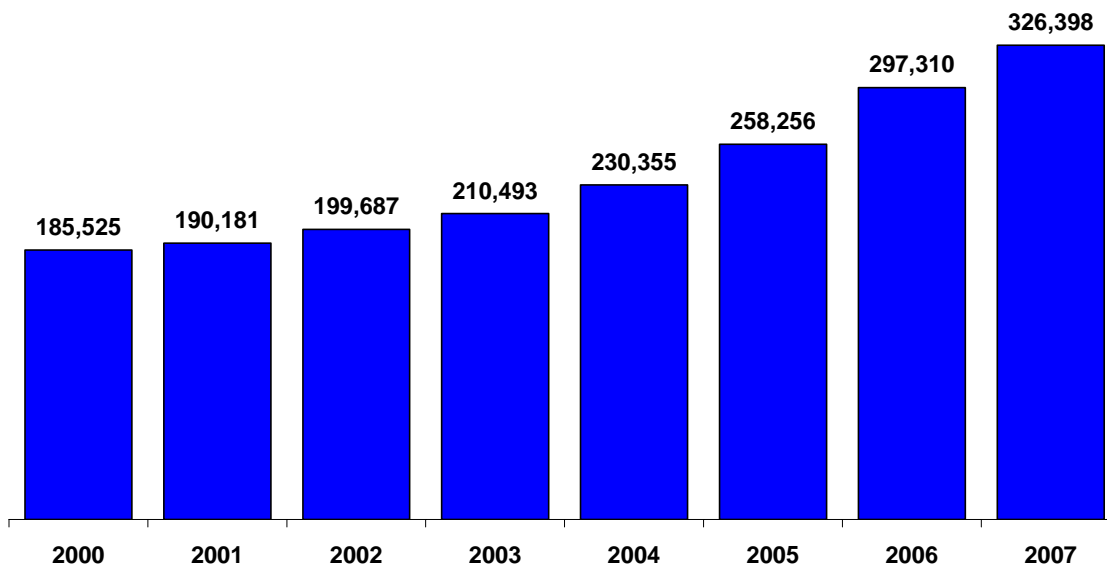
These are estimates made by the Central Arizona Association of Governments. Their purpose is to provide existing population estimates for TAZ's, which are used for transportation modeling. They do not match the official state estimates made by the state Department of Economic Security. Also, please note that these estimates have not yet been adopted by CAAG. They are draft estimates and subject to change until officially adopted by CAAG's Regional Council.

## Summary

Pinal County is the fastest growing county in Arizona in terms of percentage population growth. Estimates of total population by year are shown in Chart 1. The County grew from an estimated 185,525 persons on July 1, 2000 to an estimated 326,398 persons on July 1, 2007.

Chart 1  
Total Population  
Pinal County  
July 1, 2000 - July 1, 2007

Source: Central Arizona Association of Governments



The County's population has grown each year during the 21<sup>st</sup> Century, but growth accelerated greatly in 2004, as Chart 2 shows. Population change nearly doubled in 2004 to about 20,000 persons, and then increased even more in 2005 through 2007, peaking at 39,000 new residents in 2006.

**Chart 2**  
**Annual Population Change**  
**Pinal County**  
**2001 through 2007**

Source: Central Arizona Association of Governments

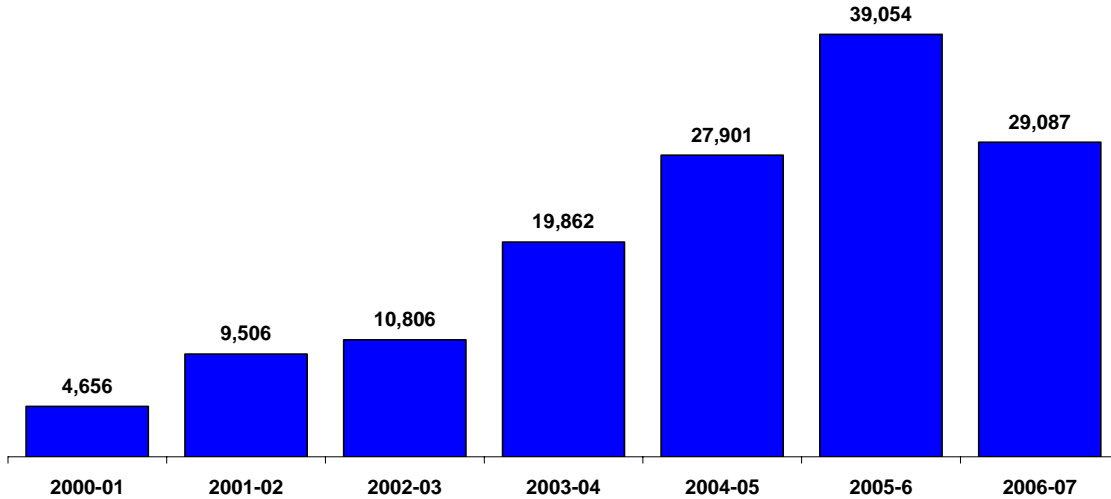


Table 1 displays total population for incorporated jurisdictions, the unincorporated County, unincorporated communities, and Indian Communities.<sup>1</sup> The latter are not included in the unincorporated County figures. Please note that estimates for incorporated areas are for the land area included within their boundaries for each separate year. Thus, their land area may have changed over the period reported. Again, these are draft estimates and subject to change until officially adopted by CAAG's Regional Council.

---

<sup>1</sup> Please note that portions of Apache Junction, Queen Creek, Winkelman, and the Gila River and Tohono O'odam Indian Communities are contained within other counties besides Pinal.

**Table 1**  
**Total Population**  
**Pinal County by Jurisdiction & Community**  
**July 1, 2000 to July 1, 2007**  
**(persons)**

Area	2000	2001	2002	2003	2004	2005	2006	2007
<b>County Total</b>	<b>185,525</b>	<b>190,181</b>	<b>199,687</b>	<b>210,493</b>	<b>230,355</b>	<b>258,256</b>	<b>297,310</b>	<b>326,398</b>
<b>Incorporated Places</b>	<b>102,505</b>	<b>105,364</b>	<b>105,746</b>	<b>112,314</b>	<b>123,076</b>	<b>136,189</b>	<b>153,838</b>	<b>170,405</b>
Apache Junction (part)	31,746	32,554	33,461	34,649	34,985	35,407	36,067	36,805
Casa Grande	25,387	27,152	28,971	31,394	33,815	36,179	38,502	41,869
Coolidge	7,808	7,984	8,129	8,201	8,322	8,799	10,217	11,590
Eloy	10,375	10,424	10,600	10,759	10,944	11,347	11,456	13,945
Florence	19,803	19,860	17,174	19,822	19,938	22,760	23,507	24,476
Kearny	2,249	2,249	2,249	2,252	2,252	2,254	2,275	2,280
Mammoth	1,762	1,762	1,762	1,762	1,765	1,770	1,780	1,782
Maricopa	-	-	-	-	7,396	13,991	26,299	33,923
Queen Creek (part)	119	119	133	197	359	362	366	366
Superior	3,254	3,258	3,265	3,276	3,298	3,318	3,367	3,367
Winkelman (part)	3	3	3	3	3	3	3	3
<b>Uninc. Pinal County</b>	<b>71,665</b>	<b>72,756</b>	<b>81,170</b>	<b>85,004</b>	<b>94,407</b>	<b>113,040</b>	<b>133,440</b>	<b>147,048</b>
<b>Uninc. Places</b>	<b>36,378</b>	<b>36,871</b>	<b>40,574</b>	<b>43,788</b>	<b>52,680</b>	<b>63,927</b>	<b>76,263</b>	<b>83,294</b>
Arizona City	9,470	9,651	10,558	11,316	12,254	13,558	15,344	16,923
Gold Canyon	7,428	7,503	8,446	8,902	10,308	11,646	12,299	12,565
Saddlebrook-Oracle	10,327	10,380	11,309	11,736	13,478	14,595	15,834	16,418
San Manuel	6,394	6,400	6,410	6,425	6,438	6,458	6,473	6,478
San Tan	2,462	2,639	3,551	5,109	9,903	17,366	26,010	30,597
Stanfield	297	297	300	300	300	304	304	311
<b>Other Unincorporated</b>	<b>35,287</b>	<b>35,885</b>	<b>40,596</b>	<b>41,216</b>	<b>41,726</b>	<b>49,114</b>	<b>57,177</b>	<b>63,754</b>
<b>Indian Communities</b>	<b>8,619</b>	<b>8,620</b>	<b>8,622</b>	<b>8,622</b>	<b>8,622</b>	<b>8,622</b>	<b>8,622</b>	<b>8,622</b>
Gila River (part)	7,187	7,188	7,190	7,190	7,190	7,190	7,190	7,190
Maricopa (Ak-Chin)	652	652	652	652	652	652	652	652
Tohono O'odham (part)	780	780	780	780	780	780	780	780

Source: Planning Department, Central Arizona Association of Governments

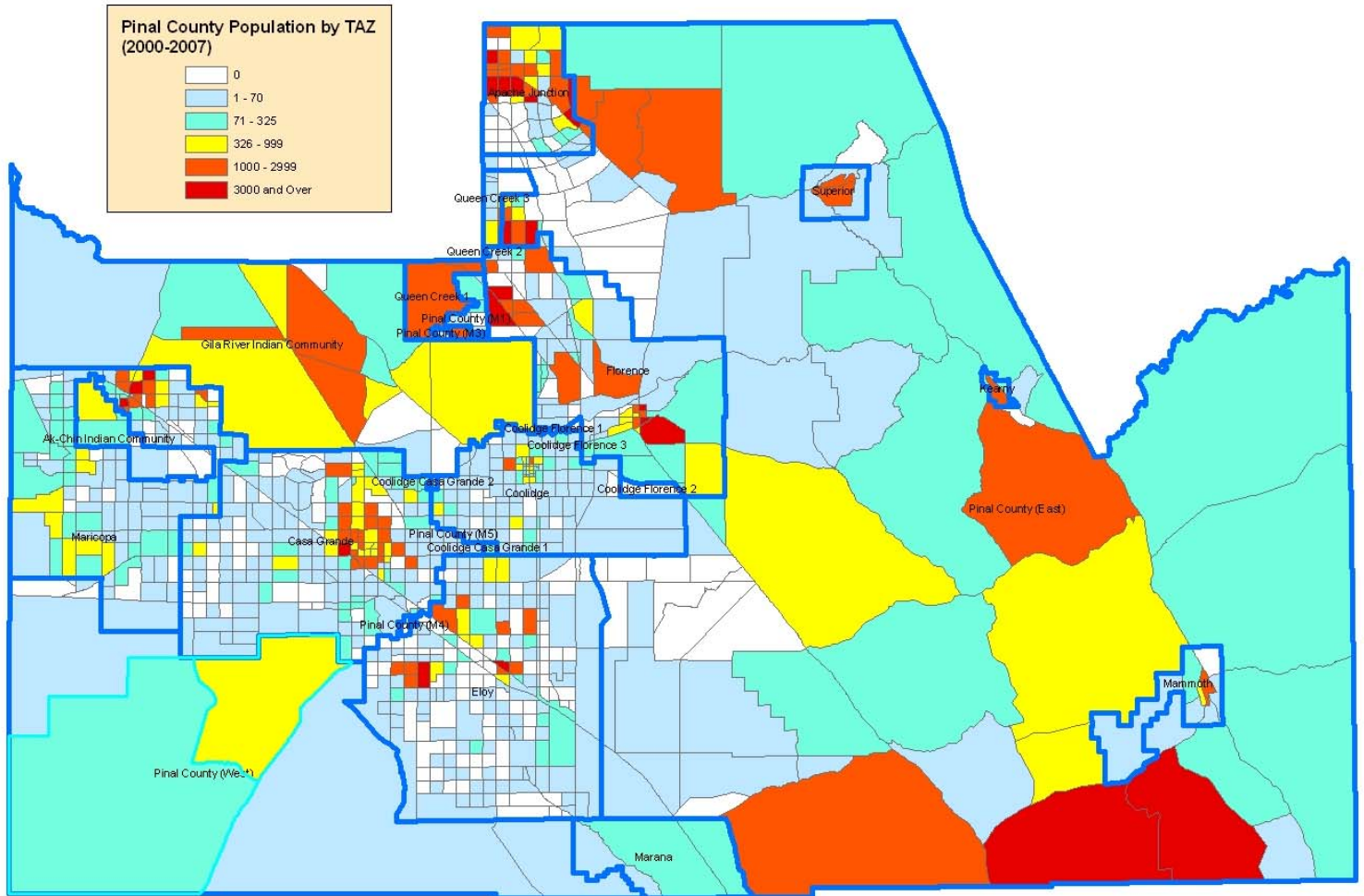
Table 2 displays population by Municipal Planning Area (MPA). MPA boundaries are as of November, 2007. MPA's are larger geographic areas than incorporated boundaries. For each city, town, and Indian Community, MPA's include portions of the unincorporated County.

**Table 2**  
**Total Population**  
**Pinal County by Municipal Planning Area**  
**July 1, 2000 through July 1, 2007**  
**(persons)**

MPA	2000	2001	2002	2003	2004	2005	2006	2007
<b>Total County</b>	<b>185,525</b>	<b>190,181</b>	<b>199,687</b>	<b>210,493</b>	<b>230,355</b>	<b>258,256</b>	<b>297,310</b>	<b>326,398</b>
Ak-Chin IC	544	544	544	544	544	544	544	544
Apache Junction	44,675	45,699	47,513	48,891	50,604	51,948	53,367	54,608
Casa Grande	37,108	38,383	40,523	43,321	46,044	48,787	51,807	55,673
Coolidge	11,161	11,345	11,532	11,706	11,934	12,543	14,167	15,720
Eloy	21,323	21,744	22,911	23,974	25,284	27,147	31,021	34,349
Florence	19,940	20,780	22,328	24,042	27,843	32,504	38,466	43,594
Gila River IC	7,187	7,188	7,190	7,190	7,190	7,190	7,190	7,190
Kearny	2,662	2,664	2,664	2,664	2,672	2,672	2,691	2,702
Mammoth	2,743	2,767	2,780	2,804	2,818	2,833	2,842	2,855
Marana	188	197	207	214	223	233	247	257
Maricopa	6,533	6,949	7,635	9,119	12,009	17,862	30,804	38,499
Pinal County	25,993	26,353	28,164	30,026	36,382	45,502	53,665	58,255
Queen Creek	2,004	2,100	2,220	2,511	3,296	4,960	6,917	8,569
Superior	3,465	3,469	3,476	3,488	3,511	3,532	3,582	3,582

Source: Planning Department, Central Arizona Association of Governments

The map below displays total population in 2007 (as of July 1) by TAZ. The categories were computed using standard deviations. White means zero population, light blue is 70 persons or under, turquoise is 71 to 325 persons, yellow is 326 to 999 persons, orange is 1,000 to 2,999 persons, and red is 3,000 persons or more. Estimates for total population, household population, group quarters population, occupied housing units, and total housing stock are each available by TAZ from 2000 through 2007.



The pattern reveals that there are a rather large number of population clusters within Pinal County. These population clusters are separated by large areas of little or no population. The largest communities (either incorporated or not) are the following, which totaled 73% of Pinal County's population in 2007:

<b>Largest Communities</b>		<b>239,111</b>
1	Casa Grande	41,869
2	Apache Junction (part)	36,805
3	Maricopa	33,923
4	San Tan	30,597
5	Florence	24,476
6	Arizona City	16,923
7	Saddlebrook-Oracle	16,418
8	Eloy	13,945
9	Gold Canyon	12,565
10	Coolidge	11,590

## Existing Population & Housing by Municipal Planning Area

### *Methodology Summary*

These estimates have been created through original databases prepared by CAAG, in cooperation with our member agencies. The specific technique used is the Housing Unit Methodology (HUM), which is described more completely in the last section of this paper. These estimates do not match the official DES estimates, which utilize a different methodology and which also do not create a consistent time series. Databases used for these estimates include the following:

1. *Geographies.* Traffic analysis zones were created by CAAG, using decision rules commonly used by transportation planners, and also using traffic analysis zones prepared by CAAG members in their Small Area Transportation Studies. TAZ definitions have all been reviewed by CAAG member agencies. Municipal Planning Area boundaries are all those of CAAG member agencies. There are some overlaps in these; in the case of overlaps, those are reported to be part of the unincorporated County MPA.
2. *Residential completions and demolitions.* These are from an original database of each completion and demolition, created by CAAG through records from January 1, 2000 through July 1, 2007 from each member agency. Each record has been geo-coded and placed in the correct geographic location. Please note that net completion records are unavailable for the Indian Communities contained within Pinal County.
3. *Group quarters facilities and population.* This is an original database created by CAAG, using information provided by Arizona Department of Health Services and the Directory of Human Services and Self-Help Support Groups for group homes, and for prison populations from member agencies. Each record has been geo-coded and placed in the correct geographic location.
4. *US Census, 2000.* Data from the April 1, 2000 Census at the block level provides the starting point for estimates. Census counts were used as starting points for housing stock, occupied housing, household population, and total population. All Census blocks were geographically rectified with TAZ's.

### *Geographies*

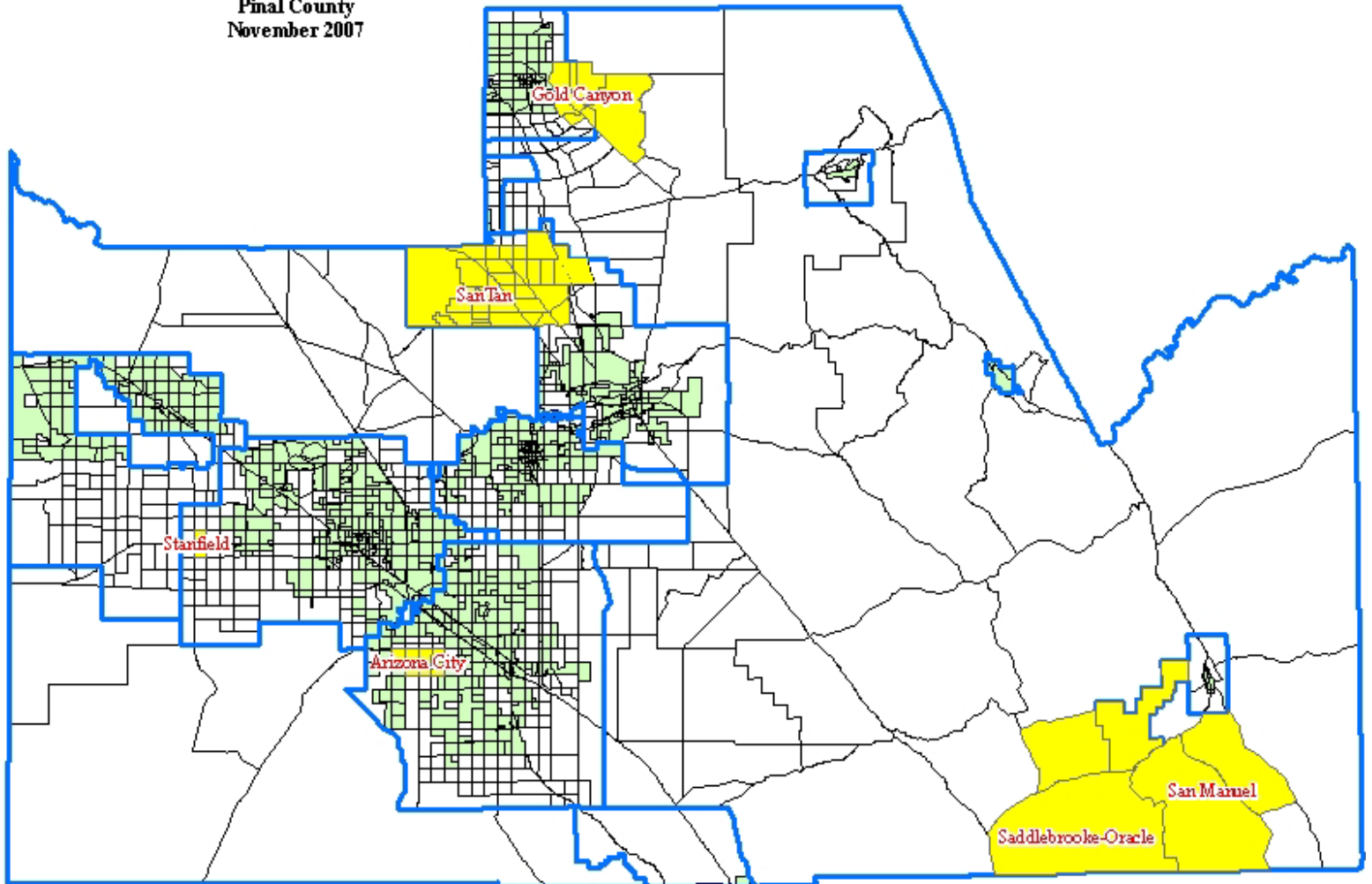
The following map shows the geographies used for these estimates – MPA's, TAZ's, incorporated cities & towns (green areas), and unincorporated communities (yellow areas). Area definitions of unincorporated communities were provided by the Pinal County Planning Department, and converted to TAZ's by CAAG.<sup>2,3</sup>

---

<sup>2</sup> In the process of making estimates for unincorporated communities, CAAG notes that the present TAZ geography does not enable separating Saddlebrooke and Oracle. This will be corrected in the 2008 revision of TAZ geographies, so that separate population estimates for each of these communities can be made in the future.

<sup>3</sup> CAAG is in the process of defining another layer of geography – Regional Analysis Zones (RAZ). These are groupings of TAZ's that result in larger areas that are sub-sets of MPA's. When complete, existing population and housing variables will be summed to the RAZ level.

**Municipal Planning Areas, Traffic Analysis Zones  
Incorporated Communities, Unincorporated Communities  
Pinal County  
November 2007**



***Housing Stock and Occupied Housing***

Population estimates begin with *housing stock*. Using CAAG's database of individual records for completions and demolitions, plus stock reported in the 2000 Census, Table 3 shows counts of stock for each year by MPA, in descending rank order. By 2007, there were an estimated 142,677 housing units in all of Pinal County. The Apache Junction MPA has the largest stock (37,217), followed by the MPA's of Pinal County and Casa Grande, both near 25,000 units. The MPA's of Florence and Maricopa each had about 16,000 housing units in their stock.

**Table 3**  
**Total Housing Stock**  
**Pinal County by Municipal Planning Area**  
**July 1, 2000 through July 1, 2007**  
**(persons)**

MPA	2000	2001	2002	2003	2004	2005	2006	2007	2000-07 Change	2000-07 % Change
<b>Total County</b>	<b>81,510</b>	<b>83,473</b>	<b>87,723</b>	<b>92,438</b>	<b>101,389</b>	<b>113,674</b>	<b>130,101</b>	<b>142,677</b>	<b>61,167</b>	<b>75.0%</b>
Apache Junction	30,488	31,178	32,411	33,344	34,507	35,417	36,378	37,217	6,729	22.1%
Pinal County	11,080	11,235	12,012	12,811	15,538	19,450	22,952	24,921	13,841	124.9%
Casa Grande	15,497	16,037	16,944	18,130	19,284	20,447	21,727	23,365	7,868	50.8%
Florence	4,782	4,936	5,507	6,176	8,076	10,483	13,657	16,339	11,557	241.7%
Maricopa	2,660	2,832	3,115	3,727	4,920	7,334	12,674	15,849	13,189	495.8%
Eloy	5,787	5,911	6,255	6,568	6,954	7,503	8,202	9,180	3,393	58.6%
Coolidge	4,346	4,419	4,493	4,562	4,653	4,895	5,539	6,156	1,810	41.6%
Queen Creek	807	845	894	1,011	1,327	1,996	2,784	3,449	2,642	327.6%
Gila River Indian Community	2,223	2,223	2,223	2,223	2,223	2,223	2,223	2,223	0	0.0%
Superior	1,499	1,501	1,504	1,509	1,519	1,528	1,550	1,550	51	3.4%
Mammoth	1,039	1,048	1,053	1,062	1,068	1,073	1,077	1,082	43	4.1%
Kearny	990	991	991	991	994	994	1,001	1,005	15	1.5%
Ak-Chin Indian Community	235	235	235	235	235	235	235	235	0	0.0%
Marana	79	83	87	90	94	98	104	108	29	36.7%

Source: Planning Department, Central Arizona Association of Governments

Annual change in housing stock is displayed in Table 4. The change in housing stock measures net completions – new residential completions minus residential demolitions. As Table 4 shows, there were 61,147 net residential completions in Pinal County between July 1, 2000 and July 1, 2007. Housing activity increased greatly beginning in 2004 and peaking in 2006.

**Table 4**  
**Change in Total Housing Stock**  
**Pinal County by Municipal Planning Area**  
**July 1, 2000 through July 1, 2007**  
**(persons)**

MPA	2001	2002	2003	2004	2005	2006	2007	2000-07 Change	2000-07 % Change
<b>Total County</b>	<b>1,962</b>	<b>4,250</b>	<b>4,716</b>	<b>8,951</b>	<b>12,285</b>	<b>16,426</b>	<b>12,577</b>	<b>61,167</b>	<b>75.0%</b>
Pinal County	155	777	799	2,726	3,912	3,502	1,969	13,841	124.9%
Maricopa	172	283	612	1,193	2,415	5,339	3,175	13,189	495.8%
Florence	154	571	669	1,899	2,407	3,174	2,682	11,557	241.7%
Casa Grande	540	907	1,186	1,154	1,162	1,280	1,638	7,868	50.8%
Eloy	690	1,233	933	1,163	910	961	839	6,729	22.1%
Apache Junction	124	344	313	386	549	699	978	3,393	58.6%
Queen Creek	39	49	117	316	670	788	665	2,642	327.6%
Coolidge	73	74	69	91	242	645	617	1,810	41.6%
Superior	2	3	5	10	9	22	0	51	3.4%
Mammoth	9	5	9	6	6	4	5	43	4.1%
Marana	4	4	3	4	4	6	4	29	36.7%
Kearny	1	0	0	3	0	7	4	15	1.5%
Gila River IC	0	0	0	0	0	0	0	0	0.0%
Ak-Chin IC	0	0	0	0	0	0	0	0	0.0%

Source: Planning Department, Central Arizona Association of Governments

Table 5 measures *occupied housing units*, which can also be interpreted as an indicator of number of households. This is computed holding the reported April 1, 2000 Census vacancy

rates constant for each year.<sup>4</sup> In the CAAG methodology, an MPA average for all census blocks contained in the MPA was used for each TAZ contained within the MPA.

In general, occupied housing units track housing stock for each MPA. There are an estimated 105,315 occupied housing units in Pinal County, an increase of 46,631 units from 2000 to 2007 (Table 6). The greatest increase was in the Pinal and Maricopa MPA's, followed by the Florence and Casa Grande MPA's.

**Table 5**  
**Occupied Housing Units**  
**Pinal County by Municipal Planning Area**  
**July 1, 2000 through July 1, 2007**  
**(persons)**

MPA	2000	2001	2002	2003	2004	2005	2006	2007	2000-07 Change	2000-07 % Change
<b>Total County</b>	<b>58,685</b>	<b>60,097</b>	<b>63,195</b>	<b>66,715</b>	<b>73,475</b>	<b>82,951</b>	<b>95,637</b>	<b>105,316</b>	<b>46,631</b>	<b>79.5%</b>
Apache Junction	17,963	18,370	19,096	19,646	20,331	20,867	21,434	21,928	3,965	22.1%
Pinal County	9,031	9,157	9,791	10,443	12,668	15,860	18,718	20,325	11,293	125.0%
Casa Grande	12,165	12,589	13,301	14,232	15,137	16,050	17,054	18,340	6,175	50.8%
Maricopa	2,125	2,262	2,488	2,977	3,929	5,858	10,122	12,658	10,533	495.8%
Florence	3,215	3,319	3,703	4,153	5,430	7,049	9,183	10,986	7,771	241.7%
Eloy	5,124	5,234	5,538	5,815	6,157	6,643	7,262	8,128	3,004	58.6%
Coolidge	3,398	3,455	3,513	3,567	3,638	3,827	4,331	4,813	1,415	41.6%
Queen Creek	721	755	799	903	1,186	1,784	2,488	3,082	2,361	327.6%
Gila River Indian Community	1,778	1,778	1,778	1,778	1,778	1,778	1,778	1,778	0	0.0%
Superior	1,225	1,227	1,229	1,234	1,242	1,249	1,267	1,267	42	3.4%
Kearny	871	872	872	872	874	874	881	884	13	1.5%
Mammoth	814	821	825	832	836	841	843	847	33	4.1%
Ak-Chin Indian Community	188	188	188	188	188	188	188	188	0	0.0%
Marana	67	70	74	76	79	83	88	91	25	36.7%

Source: Planning Department, Central Arizona Association of Governments

**Table 6**  
**Change in Occupied Housing Units**  
**Pinal County by Municipal Planning Area**  
**July 1, 2000 through July 1, 2007**  
**(persons)**

MPA	2001	2002	2003	2004	2005	2006	2007	2000-07 Change	2000-07 % Change
<b>Total County</b>	<b>1,411</b>	<b>3,098</b>	<b>3,521</b>	<b>6,759</b>	<b>9,476</b>	<b>12,686</b>	<b>9,680</b>	<b>46,631</b>	<b>79.5%</b>
Pinal County	126	634	652	2,225	3,192	2,858	1,607	11,293	125.0%
Maricopa	137	226	489	953	1,928	4,264	2,536	10,533	495.8%
Florence	104	384	450	1,277	1,618	2,134	1,804	7,771	241.7%
Casa Grande	424	712	931	906	912	1,005	1,286	6,175	50.8%
Eloy	407	726	550	685	536	566	494	3,965	22.1%
Apache Junction	110	305	277	342	486	619	866	3,004	58.6%
Queen Creek	34	43	105	282	598	704	594	2,361	327.6%
Coolidge	57	58	54	71	189	504	482	1,415	41.6%
Superior	2	2	4	8	7	18	0	42	3.4%
Mammoth	7	4	7	4	4	3	4	33	4.1%
Marana	3	3	3	3	3	5	3	25	36.7%
Kearny	1	0	0	3	0	6	4	13	1.5%
Gila River IC	0	0	0	0	0	0	0	0	0.0%
Ak-Chin IC	0	0	0	0	0	0	0	0	0.0%

Source: Planning Department, Central Arizona Association of Governments

<sup>4</sup> This is a weakness in the methodology, as vacancy rates can be expected to fluctuate depending on seasonality and stage of the housing cycle. It is anticipated that, by about 2012, the Census Bureau's American Community Survey will have enough sample records to incorporate annual vacancy rate changes.

## Population Components

There are three components of population: (1) household population measures persons living in occupied housing units, (2) group quarters population measures persons living in group quarters (such as college dormitories and prisons), and (3) total population is the sum of those two components. Pinal County is unusual, in that it has a relatively high number of group quarters population due mainly to state prisons.

*Household population* is shown in Table 7. This is computed by multiplying persons per household by occupied housing units. Like housing vacancy rates, persons per household are currently available only from the 2000 Census.<sup>5</sup> In 2007, household population was an estimated 305,475 persons in Pinal County – the largest share of population change. The MPA's of Pinal County, Casa Grande and Apache Junction all were the largest and about the same size. They are followed in size by the MPA's of Maricopa, Eloy and Florence.

**Table 7**  
**Household Population**  
**Pinal County by Municipal Planning Area**  
**July 1, 2000 through July 1, 2007**  
**(persons)**

MPA	2000	2001	2002	2003	2004	2005	2006	2007	2000-07 Change	2000-07 % Change
<b>Total County</b>	<b>170,297</b>	<b>174,355</b>	<b>183,262</b>	<b>193,470</b>	<b>212,735</b>	<b>240,038</b>	<b>276,993</b>	<b>305,475</b>	<b>135,178</b>	<b>79.4%</b>
Pinal County	25,800	26,160	27,972	29,834	36,190	45,309	53,473	58,063	32,263	125.0%
Casa Grande	36,570	37,844	39,984	42,782	45,506	48,248	51,269	55,134	18,565	50.8%
Apache Junction	44,420	45,425	47,221	48,581	50,275	51,601	53,001	54,224	9,804	22.1%
Maricopa	6,448	6,864	7,550	9,034	11,924	17,777	30,719	38,414	31,967	495.8%
Eloy	19,639	20,060	21,227	22,290	23,600	25,463	27,835	31,155	11,516	58.6%
Florence	8,110	8,371	9,340	10,475	13,697	17,779	23,162	27,711	19,601	241.7%
Coolidge	10,948	11,132	11,318	11,492	11,720	12,330	13,953	15,507	4,559	41.6%
Queen Creek	2,004	2,100	2,220	2,511	3,296	4,960	6,917	8,569	6,565	327.6%
Gila River Indian Community	6,758	6,758	6,758	6,758	6,758	6,758	6,758	6,758	0	0.0%
Superior	3,465	3,469	3,476	3,488	3,511	3,532	3,582	3,582	118	3.4%
Mammoth	2,743	2,767	2,780	2,804	2,818	2,833	2,842	2,855	112	4.1%
Kearny	2,662	2,664	2,664	2,664	2,672	2,672	2,691	2,702	40	1.5%
Ak-Chin Indian Community	544	544	544	544	544	544	544	544	0	0.0%
Marana	188	197	207	214	223	233	247	257	69	36.7%

Source: Planning Department, Central Arizona Association of Governments

During the period from 2000 to 2007, there were an additional 135,178 persons added to household population in Pinal County (Table 8). The greatest change in household population occurred in the Pinal County and Maricopa MPA's, both exceeding 30,000 persons. Like housing stock, household population change increased dramatically in 2004 and after, peaking in 2006.

<sup>5</sup> This is a weakness in the methodology, as persons per household can change, depending on the characteristics of new residents. It is anticipated that, by about 2012, the Census Bureau's American Community Survey will have enough sample records to incorporate annual changes in persons per household.

**Table 8**  
**Change in Household Population**  
**Pinal County by Municipal Planning Area**  
**July 1, 2000 through July 1, 2007**  
**(persons)**

MPA	2001	2002	2003	2004	2005	2006	2007	2000-07 Change	2000-07 % Change
<b>Total County</b>	<b>4,058</b>	<b>8,907</b>	<b>10,208</b>	<b>19,265</b>	<b>27,304</b>	<b>36,955</b>	<b>28,482</b>	<b>135,178</b>	<b>79.4%</b>
Pinal County	360	1,812	1,862	6,356	9,120	8,164	4,590	32,263	125.0%
Maricopa	416	686	1,484	2,891	5,852	12,942	7,696	31,967	495.8%
Florence	261	969	1,135	3,222	4,082	5,383	4,549	19,601	241.7%
Casa Grande	1,274	2,140	2,798	2,724	2,742	3,020	3,866	18,565	50.8%
Eloy	421	1,168	1,062	1,310	1,863	2,372	3,319	11,516	58.6%
Apache Junction	1,005	1,796	1,359	1,694	1,326	1,400	1,222	9,804	22.1%
Queen Creek	96	121	291	785	1,664	1,957	1,653	6,565	327.6%
Coolidge	184	186	174	228	610	1,624	1,553	4,559	41.6%
Superior	5	7	12	23	21	51	0	118	3.4%
Mammoth	24	13	24	15	15	9	13	112	4.1%
Marana	10	10	7	10	10	14	10	69	36.7%
Kearny	3	0	0	8	0	19	11	40	1.5%
Gila River IC	0	0	0	0	0	0	0	0	0.0%
Ak-Chin IC	0	0	0	0	0	0	0	0	0.0%

Source: Planning Department, Central Arizona Association of Governments

Group quarters population (Table 9) is relatively large in Pinal County, due to the large number of state prisons. In 2007, there were an estimated 20,919 persons living in group prisons, up from 15,288 in 2000. The Florence MPA, where most state prisons are located, has the largest number. This is followed by the Eloy MPA, which also has several state prisons.

**Table 9**  
**Group Quarters Population**  
**Pinal County by Municipal Planning Area**  
**July 1, 2000 through July 1, 2007**  
**(persons)**

MPA	2000	2001	2002	2003	2004	2005	2006	2007	2000-07 Change	2000-07 % Change
<b>Total County</b>	<b>15,228</b>	<b>15,825</b>	<b>16,422</b>	<b>17,020</b>	<b>17,617</b>	<b>18,215</b>	<b>20,314</b>	<b>20,919</b>	<b>5,692</b>	<b>37.4%</b>
Florence	11,830	12,409	12,988	13,567	14,146	14,725	15,304	15,883	4,053	34.3%
Eloy	1,684	1,684	1,684	1,684	1,684	1,684	3,186	3,194	1,510	89.7%
Casa Grande	539	539	539	539	539	539	539	539	0	0.0%
Gila River Indian Community	429	429	429	429	429	429	429	429	0	0.0%
Apache Junction	255	274	292	310	329	347	366	384	129	50.5%
Coolidge	214	214	214	214	214	214	214	214	0	0.0%
Pinal County	192	192	192	192	192	192	192	192	0	0.0%
Maricopa	85	85	85	85	85	85	85	85	0	0.0%
Ak-Chin Indian Community	0	0	0	0	0	0	0	0	0	NA
Kearny	0	0	0	0	0	0	0	0	0	NA
Mammoth	0	0	0	0	0	0	0	0	0	NA
Marana	0	0	0	0	0	0	0	0	0	NA
Queen Creek	0	0	0	0	0	0	0	0	0	NA
Superior	0	0	0	0	0	0	0	0	0	NA

Source: Planning Department, Central Arizona Association of Governments

**Table 10**  
**Change in Group Quarters Population**  
**Pinal County by Municipal Planning Area**  
**July 1, 2000 through July 1, 2007**  
**(persons)**

MPA	2001	2002	2003	2004	2005	2006	2007	2000-07 Change	2000-07 % Change
<b>Total County</b>	<b>597</b>	<b>597</b>	<b>597</b>	<b>597</b>	<b>597</b>	<b>2,099</b>	<b>605</b>	<b>5,692</b>	<b>37.4%</b>
Florence	579	579	579	579	579	579	579	4,053	34.3%
Eloy	0	0	0	0	0	1,502	8	1,510	89.7%
Apache Junction	18	18	18	18	18	18	18	129	50.5%
Ak-Chin Indian Community	0	0	0	0	0	0	0	0	NA
Casa Grande	0	0	0	0	0	0	0	0	0.0%
Coolidge	0	0	0	0	0	0	0	0	0.0%
Gila River Indian Community	0	0	0	0	0	0	0	0	0.0%
Kearny	0	0	0	0	0	0	0	0	NA
Mammoth	0	0	0	0	0	0	0	0	NA
Marana	0	0	0	0	0	0	0	0	NA
Maricopa	0	0	0	0	0	0	0	0	0.0%
Pinal County	0	0	0	0	0	0	0	0	0.0%
Queen Creek	0	0	0	0	0	0	0	0	NA
Superior	0	0	0	0	0	0	0	0	NA

Source: Planning Department, Central Arizona Association of Governments

As Table 10 shows, between 2000 and 2007, there was a 37.4 percent increase in group quarters population, an increase of 5,692 persons. Over 70 percent of this increase was due to expanded prison population in the Florence MPA, followed by additional prison population in the Eloy MPA.

Total population is the sum of household and group quarters population. By July 1, 2007, there were an estimated 326,398 persons living in Pinal County (Table 11). By MPA, Pinal County,

**Table 11**  
**Total Population**  
**Pinal County by Municipal Planning Area**  
**July 1, 2000 through July 1, 2007**  
**(persons)**

MPA	2000	2001	2002	2003	2004	2005	2006	2007	2000-07 Change	2000-07 % Change
<b>Total County</b>	<b>185,525</b>	<b>190,181</b>	<b>199,687</b>	<b>210,493</b>	<b>230,355</b>	<b>258,256</b>	<b>297,310</b>	<b>326,398</b>	<b>140,873</b>	<b>75.9%</b>
Pinal County	25,993	26,353	28,164	30,026	36,382	45,502	53,665	58,255	32,263	124.1%
Casa Grande	37,108	38,383	40,523	43,321	46,044	48,787	51,807	55,673	18,565	50.0%
Apache Junction	44,675	45,699	47,513	48,891	50,604	51,948	53,367	54,608	9,933	22.2%
Florence	19,940	20,780	22,328	24,042	27,843	32,504	38,466	43,594	23,654	118.6%
Maricopa	6,533	6,949	7,635	9,119	12,009	17,862	30,804	38,499	31,967	489.3%
Eloy	21,323	21,744	22,911	23,974	25,284	27,147	31,021	34,349	13,026	61.1%
Coolidge	11,161	11,345	11,532	11,706	11,934	12,543	14,167	15,720	4,559	40.8%
Queen Creek	2,004	2,100	2,220	2,511	3,296	4,960	6,917	8,569	6,565	327.6%
Gila River IC	7,187	7,188	7,190	7,190	7,190	7,190	7,190	7,190	3	0.0%
Superior	3,465	3,469	3,476	3,488	3,511	3,532	3,582	3,582	118	3.4%
Mammoth	2,743	2,767	2,780	2,804	2,818	2,833	2,842	2,855	112	4.1%
Kearny	2,662	2,664	2,664	2,664	2,672	2,672	2,691	2,702	40	1.5%
Ak-Chin IC	544	544	544	544	544	544	544	544	0	0.0%
Marana	188	197	207	214	223	233	247	257	69	36.7%

Source: Planning Department, Central Arizona Association of Governments

Casa Grande and Apache Junction all exceeded 50,000 persons. These are followed by the

MPA's of Florence (43,594), Maricopa (38,499), and Eloy (34,389). The Coolidge MPA had an estimated 15,720 persons in 2007. All other MPA's are considerably smaller in population size.

Looking at population change (Table 12), Pinal County's population expanded by more than 75% from July 1, 2000 to July 1, 2007 – an increase of 140,873 persons. Table 11 displays population change by MPA, in rank order of change. The greatest expansions occurred in the Pinal County and Maricopa MPA's, both over 30,000 persons. This is followed by Florence (over 23,000 persons) and Casa Grande (over 18,000 persons). The Eloy MPA grew by more than 13,000 persons during the period, followed by the Apache Junction MPA at nearly 10,000 persons. The Queen Creek and Coolidge MPA's also had significant growth relative to their population size. The other MPA's grew very little, though Marana experienced greater percentage increase from a small base.

**Table 12**  
**Change in Total Population**  
**Pinal County by Municipal Planning Area**  
**July 1, 2000 through July 1, 2007**  
**(persons)**

MPA	2001	2002	2003	2004	2005	2006	2007	2000-07 Change	2000-07 % Change
<b>Total County</b>	<b>4,656</b>	<b>9,506</b>	<b>10,806</b>	<b>19,862</b>	<b>27,901</b>	<b>39,054</b>	<b>29,087</b>	<b>140,873</b>	<b>75.9%</b>
Pinal County	360	1,812	1,862	6,356	9,120	8,164	4,590	32,263	124.1%
Maricopa	416	686	1,484	2,891	5,852	12,942	7,696	31,967	489.3%
Florence	840	1,548	1,714	3,801	4,661	5,962	5,128	23,654	118.6%
Casa Grande	1,274	2,140	2,798	2,724	2,742	3,020	3,866	18,565	50.0%
Eloy	421	1,168	1,062	1,310	1,863	3,874	3,327	13,026	61.1%
Apache Junction	1,024	1,815	1,378	1,713	1,344	1,419	1,241	9,933	22.2%
Queen Creek	96	121	291	785	1,664	1,957	1,653	6,565	327.6%
Coolidge	184	186	174	228	610	1,624	1,553	4,559	40.8%
Superior	5	7	12	23	21	51	0	118	3.4%
Mammoth	24	13	24	15	15	9	13	112	4.1%
Marana	10	10	7	10	10	14	10	69	36.7%
Kearny	3	0	0	8	0	19	11	40	1.5%
Gila River IC	1	2	0	0	0	0	0	3	0.0%
Ak-Chin IC	0	0	0	0	0	0	0	0	0.0%

Source: Planning Department, Central Arizona Association of Governments

## For Further Information

Planning Department  
 Central Arizona Association of Governments  
 2066 W. Apache Trail, Suite 110  
 Apache Junction, AZ 85220  
 480-671-0059

James Clancy  
 Principal Planner  
[jclancy@caagcentral.org](mailto:jclancy@caagcentral.org)

Jack Tomasiak  
 Planning Director  
[tjack1027@qwest.net](mailto:tjack1027@qwest.net)