

Pinal County Future Land Use CAAG October 2009

The Future Land Use database is a merger of local jurisdictional general plans, state trust lands conceptual plans, employment centers, development projects, and special areas based on knowledge well known by the jurisdictions or other sources. The database is updated annually and is current as of July 1, 2009. All data is collected and reviewed by each CAAG member agency. The database is maintained using Arc GIS, processed by an ESRI Model Builder model developed by TSSW. The shapefiles are available upon request through the CAAG license agreement.

This database does not represent a legal survey and is intended for general planning purposes only.

CAAG contact:

Angela Gotto

Database Manager

2066 W. Apache Trail

Apache Junction, AZ 85120

Office: (480) 671-0059

Fax: (480) 671-0176

Email: agotto@caagcentral.org

File information

Filename	ca_Future_LandUse_2009
Projection	NAD_1983_StatePlane_Arizona_Central_FIPS_0202_IntlFeet
Registration	Pinal County street network, parcel database
Data sources	General Plans, State Land Department Conceptual Plans, Employment Centers, Development Projects, CAAG Traffic Analysis Zones, Assumptions provided by CAAG's member agencies and other sources.
Last Update	July 2009

Report Organization

The report summarizes the total number of acres per land use category by Municipal Planning Area (MPA).

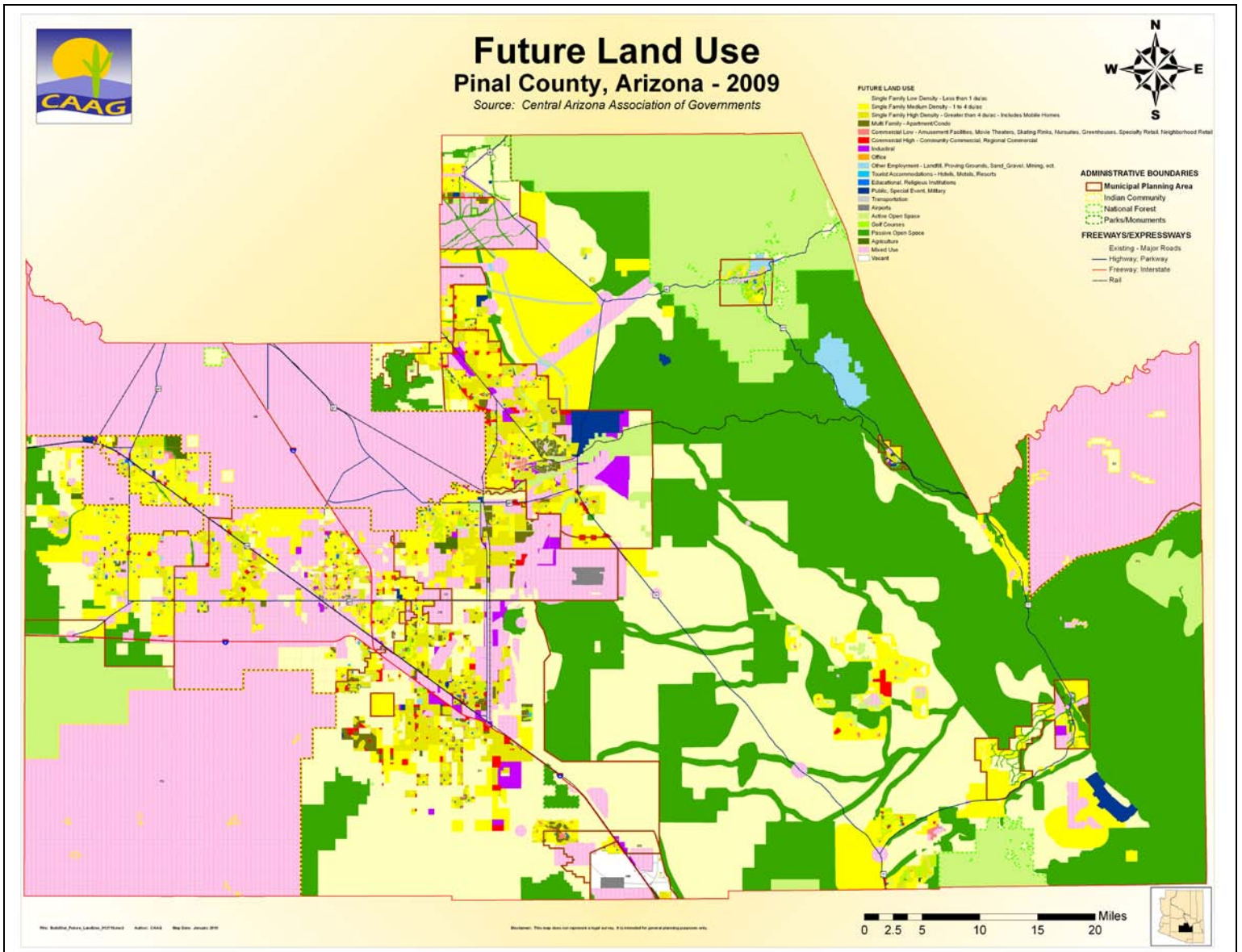
1. Summary Results

**Table 1:
Pinal County Total Acres per General Land Use by Municipal Planning Boundary**

MPA	Square Miles	Acres	Residential	Commercial	Industrial	Office	Public	Transportation	Open Space	Mixed Use	Unclassified
Apache Junction (<i>part</i>)	68.48	43,825.31	17,058.14	359.61	0.00	0.00	223.87	392.26	7,126.10	18,665.33	0.00
AK-Chin	32.93	21,073.49	24.61	0.00	0.95	0.00	0.56	0.00	5.37	21,042.00	0.00
Casa Grande-Coolidge	1.14	728.78	12.35	0.00	0.00	0.00	0.00	0.00	0.28	716.16	0.00
Casa Grande-Eloy	5.56	3,560.27	179.58	22.75	0.00	0.00	0.00	0.00	11.61	3,346.33	0.00
Coolidge-Florence	6.50	4,160.43	2,309.62	203.41	18.79	0.00	0.00	0.00	668.55	960.07	0.00
Casa Grande	267.38	171,125.36	66,489.26	2,688.31	784.55	213.71	713.43	0.37	3,090.83	97,144.90	0.00
Coolidge	136.99	87,674.29	38,253.53	1,496.64	1,723.98	19.31	340.03	3,591.51	4,514.44	37,734.84	0.00
Eloy-Marana	20.77	13,290.86	9,158.96	186.97	353.17	32.18	67.08	16.34	4.21	3,454.61	17.34
Eloy	541.39	346,488.22	271,395.21	5,778.01	6,075.26	42.46	1,129.13	711.54	34,436.56	26,920.04	0.00
Florence	189.84	121,496.39	69,118.65	4,331.86	8,180.96	319.90	7,397.58	34.19	18,012.77	14,100.47	0.00
Gila River (<i>part</i>)	436.05	279,071.46	3,222.52	9.67	0.55	5.15	1.59	2,147.83	79.29	273,604.86	0.00
Kearny	3.91	2,502.00	992.48	1.12	35.24	3.48	149.75	0.00	1,102.33	217.59	0.00
Mammoth	41.37	26,477.22	17,161.17	3.04	551.28	0.00	36.95	0.00	6,211.01	2,513.76	0.00
Marana (<i>part</i>)	28.52	18,251.66	1,370.32	53.26	110.72	0.00	31.16	1,343.69	375.44	4,915.75	10,051.31
Maricopa	232.69	148,923.79	85,475.05	1,639.50	107.84	118.96	1,361.77	158.92	34,829.01	25,232.75	0.00
Pinal County (<i>unincorporated</i>)	3,111.61	1,991,429.56	566,328.23	2,821.41	14.82	29.26	16,488.97	2,772.15	1,109,130.11	293,844.61	0.00
Queen Creek (<i>part</i>)	20.61	13,187.89	7,824.76	158.37	0.00	0.00	53.74	2.12	702.47	4,446.42	0.00
San Carlos (<i>part</i>)	212.01	135,688.55	3,664.98	0.00	0.00	0.00	0.00	0.00	330.16	131,693.41	0.00
Superior	18.01	11,529.31	2,819.52	0.71	0.13	34.72	1,199.00	889.61	5,681.42	904.19	0.00
TOTAL:	5,375.76	3,440,484.84	1,162,858.95	19,754.64	17,958.24	819.14	29,194.61	12,060.54	1,226,311.95	961,458.10	10,068.66

Source: Pinal County Future Land Use Database (ca_Future_LandUse_2009; ca_GPCComposite_2009.shp; ca_ASLD_2009.shp; ca_EDAEmploymentCenters_2009.shp; ca_PCDevs_ILU_July2009.shp)

Map 1: Pinal County Future Land Use July 2009



Source: Pinal County Build-Out Database (BuildOut_Future_LandUse_012710.jpg)